



478 Schiller St. – Elizabeth, NJ 07206
 908-351-0606(P) 908-351-0369(F)
 sales@universalvalve.com

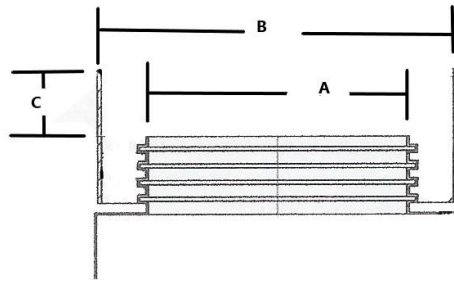
Sump Retro Fit Lid Ordering Form

Universal's retrofit cover truly eliminates water leakage. Our DOUBLE SEAL design keeps your sumps completely dry! Quick 1 stop install. No waiting for glues or adhesives to dry overnight!



Take 3 measurements. If you are not sure which kit to use call or email us and we can help you decide which retro fit lid will work best for your application.

- A. Sump opening
- B. Manhole opening
- C. Height from sump opening to grade



- A. Sump opening OD to OD
- B. Manhole opening
Smallest opening - typically ID of the ring

Sump	A (sump opening)	B (Manhole opening)	C (Height from sump opening to grade)

Standard size kits (custom lids also available)

Model	Range of sump openings	Inner manway id opening required
1943-2128	20.5" to 28.5"	29.5"
1943-2533	25" to 33.5"	34"
1943-2734	27" to 34.75"	34 3/4"
1943-3240	32" to 40"	41"

Distributor Name: _____

Contact: _____

e-mail/Phone #: _____

Site information / Notes: _____

E-mail form to sales@universalvalve.com or Fax 908-351-0369

*****Please be sure to include your contact information*****



478 Schiller St. – Elizabeth, NJ 07206
908-351-0606(P) 908-351-0369(F)
sales@universalvalve.com