



Family Owned Over 75 Years. We Care!

ISLAND FORMS

ISLAND FORMS 6" RADIUS CORNERS

Application -

Island forms and curbing protect your most important equipment. Dispensers, ATM's, air machines, and much more. Designed to keep your dispenser equipment off of ground level to help keep water out of your dispenser sumps. Combine with Universal Pipe Guards and Bollards for maximum protection.

Features -

- ✓ Special slide cross braces require no field welding and are easily moved to accommodate many sump sizes
- ✓ Cost effective property protection

Construction -

- 12 gauge steel
- Primer coated black
- Available in Carbon Steel & Stainless Steel (304-SS)

Complete Island Form Kits:

CK- _____
 2 = 9" Tall Width: 3', 4' 5' Length: Starting at 4' Material: SS for Stainless Steel
 3 = 13" Tall in 1 ft increments Empty for Carbon Steel

(example: 3CK-430-SS 13" tall 4ft wide x 30ft long Stainless Steel)



End Caps:

EC- _____
 2 = 9" Tall Width: 36", Length: 24", 30", 36" Material: SS for Stainless Steel
 3 = 13" Tall 48", 60" Empty for Carbon Steel

(example: 3EC-4830-SS 13" tall 48" wide x 30" long Stainless Steel)



Side Rails:

SR- _____
 2 = 9" Tall Width: 1ft increments Material: SS for Stainless Steel
 3 = 13" Tall up to 12 ft. Empty for Carbon Steel

(example: 3SR-3-SS 13" tall 3 ft long Stainless Steel)



Cross Braces:

3CB- _____
 Length: 36", 48", 60"

(example: 3CB-36 36" long cross brace)



Notice: Universal Valve Co., products must be used in compliance with applicable federal, state, and local laws and regulations. Product selection should be based on physical specifications and limitations and compatibility with the environment and material to be handled. Universal Valve Co., makes no warranty of fitness for a particular use. All illustrations and specifications in this literature are based on the latest production information available at the time of publication. Prices, materials, and specification are subject to change at any time, and models may be discontinued at any time, in either case, without notice or obligation.

UNIVERSAL VALVE COMPANY

478 Schiller Street, Elizabeth, NJ 07206 • (800) 223-0741 • (908) 351-0606 • Fax: (908) 351-0369 • universalvalve.com

© 2015 Universal Valve Company, Inc.



Family Owned Over 75 Years. We Care!

ISLAND FORMS

ISLAND FORMS – FULL RADIUS ENDS

Application -

Island forms and curbing protect your most important equipment. Dispensers, ATM's, air machines, and much more. Designed to keep your dispenser equipment off of ground level to help keep water out of your dispenser sumps. Combine with Universal Pipe Guards and Bollards for maximum protection.

Features -

- ✓ Special slide cross braces require no field welding and are easily moved to accommodate many sump sizes
- ✓ Cost effective property protection

Construction -

- 12 gauge steel
- Primer coated black
- Available in Carbon Steel & Stainless Steel (304-SS)

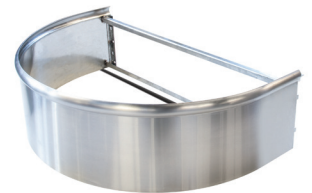
Complete Island Form Kits:

_____ CK-FR _____ - _____
 2 = 9" Tall Width: 3', 4' 5' Length: Starting at 4' Material: SS for Stainless Steel
 3 = 13" Tall in 1 ft increments Empty for Carbon Steel
 (example: 3CK-FR430-SS 13" tall 4ft wide x 30ft long Stainless Steel)



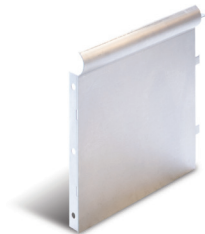
End Caps:

_____ EC-FR _____ - _____
 2 = 9" Tall Width: 36", Length: 24", 30", 36" Material: SS for Stainless Steel
 3 = 13" Tall 48", 60" Empty for Carbon Steel
 (example: 3EC-FR4830-SS 13" tall 48" wide x 30" long Stainless Steel)



Side Rails:

_____ SR- _____ - _____
 2 = 9" Tall Width: 1ft increments Material: SS for Stainless Steel
 3 = 13" Tall up to 12 ft. Empty for Carbon Steel
 (example: 3SR-3-SS 13" tall 3 ft long Stainless Steel)



Cross Braces:

3CB- _____
 Length: 36", 48", 60"
 (example: 3CB-36 36" long cross brace)



Notice: Universal Valve Co., products must be used in compliance with applicable federal, state, and local laws and regulations. Product selection should be based on physical specifications and limitations and compatibility with the environment and material to be handled. Universal Valve Co., makes no warranty of fitness for a particular use. All illustrations and specifications in this literature are based on the latest production information available at the time of publication. Prices, materials, and specification are subject to change at any time, and models may be discontinued at any time, in either case, without notice or obligation.